

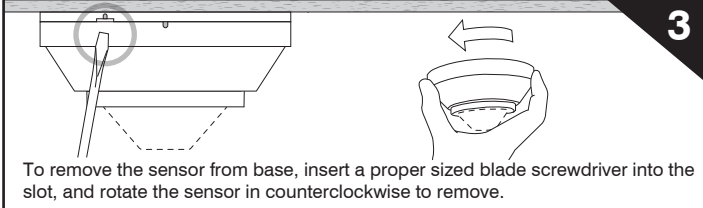
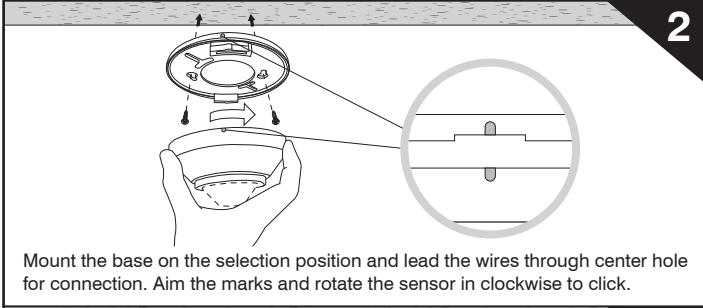
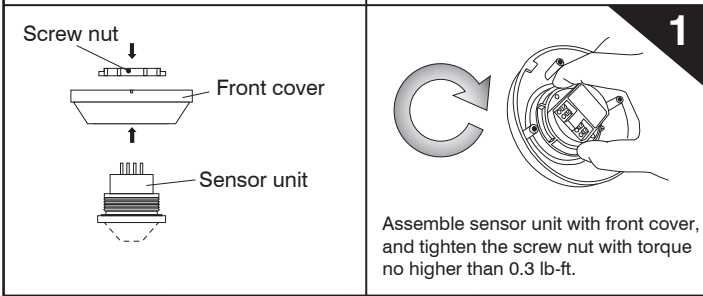
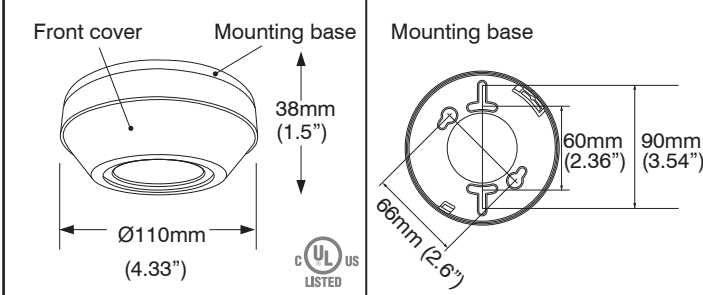
TRANS

MOUNTING INSTRUCTIONS

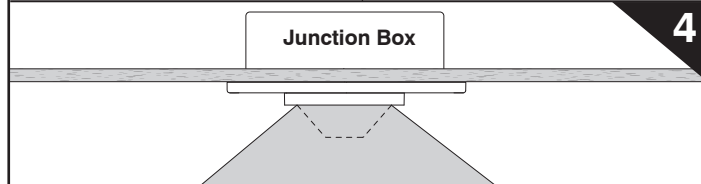
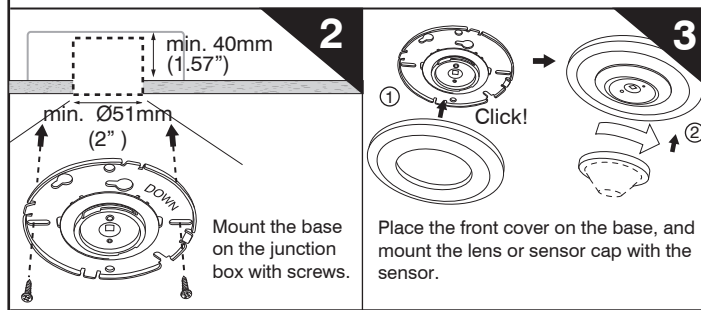
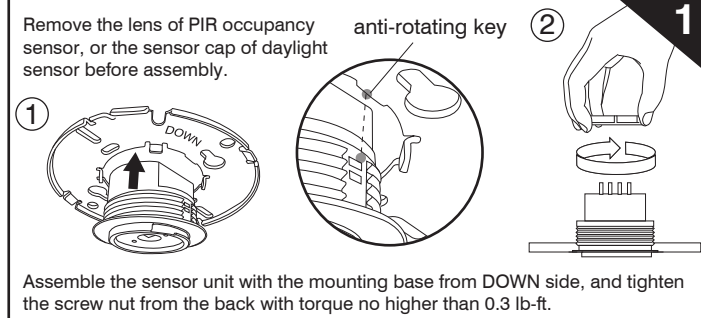
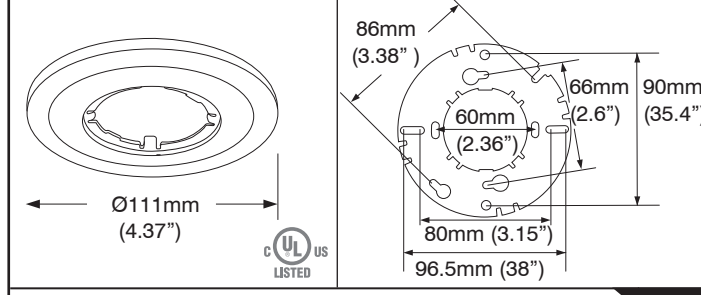
TRANS sensor family is available with multiple mounting options with or without a mounting bracket. These mounting options allow the sensor to be integrated with lighting fixture or mounted on the ceiling in various ways.

NOTE: F/E/S/C/R/L-mount is for indoor dry location use only.

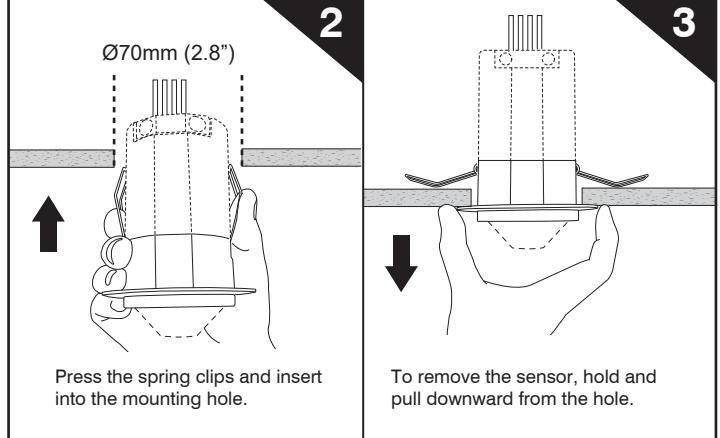
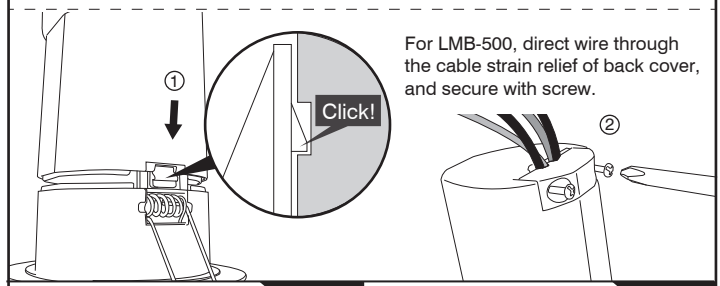
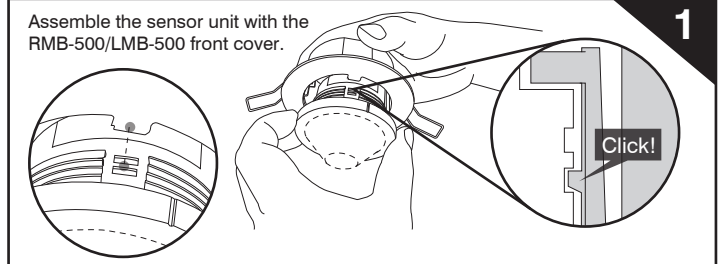
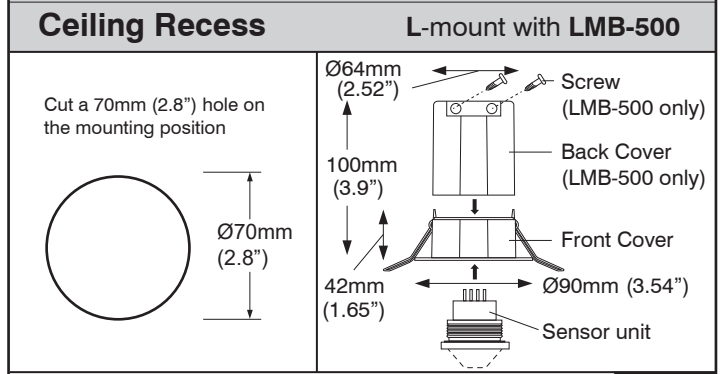
Ceiling Surface S-mount with SMB-500



Junction Box C-mount with CMB-500



Ceiling Recess R-mount with RMB-500



Fixture Integrated F-mount
IP-66 Fixture Integrated W-mount

Sensor assembly hole on the fixture

1

Sensor assembly

Rubber gasket (W-mount only)

40mm (1.57")

Assemble the sensor into the hole, and tighten the screw nut with torque no more than 0.3 lb-ft.

2

Note: For IP-66 fixture integration, ensure the rubber gasket is placed in between the fixture enclosure and sensor unit.

Light fixture

3

Fixture Internal I-mount with IMB-500
 (For HFD sensor only)

1

2

3

Light fixture

Click!

Fixture External E-mount with EMB-500
IP-66 Fixture External P-mount with PMB-500

EMB-500 & PMB-500

90mm (3.54")

46mm (1.8")

Ø111mm (4.37")

1

Plug (PMB-500 only)

Screw

Cover

Screw nut

Nut

Rubber gasket (PMB-500 only)

Sensor base

Sensor unit

Sensor with wire leads 2 **Sensor with terminal block** 2

1 Assemble the sensor with fixture via the knockout hole

Light fixture

Ballast Driver

2 Tighten the screw nut

1 Remove the top cover and assemble the sensor with fixture via the knockout hole

Light fixture

2 Lead the wires through the hole and connect to the terminal block

3 Restore the top cover and tighten the screws. Seal the screw holes with rubber plugs

Note: For IP-66 fixture integration with PMB-500, ensure the rubber gasket is placed in between the fixture enclosure and sensor unit.

POLE MOUNT

Rubber Gasket

PMB-500

Sensor

POLE

Removable cover

ACCESSORIES

Extension Mounting Adaptor EMA-500

38mm (1.5")

125mm (4.92")

24mm (0.94")

65mm (2.56")

The EMA-500 is an Extension Mounting Adaptor designed for the sensor with EMB-500 or PMB-500. It can be used to lower the mounting position of sensor to prevent the coverage of PIR based occupancy sensor being blocked by the fixture body or enclosure.

This is not a UL approved mounting option for line voltage sensor.

Assemble with EMB-500

1 Separate the adaptor

2

3 Click!

4

1

2

Light fixture

2

Light fixture

If the lighting fixture has a wider lower enclosure, use double screw nuts on the threaded nipple to prevent sensor being tilted.

Extension Joint EJ-30 / EJ-50 / EL-40

UL LISTED

a EJ-30 30mm (1.18")

b EJ-50 50mm (1.97")

c EL-40 40mm (1.57")

With E/P - mount

The EJ-30, EJ-50 and EL-40 are extension joints that can be used to extend the E/P mount sensor position for 30, 40 and 50 mm. Combine the joints if longer extension is required. For outdoor use, order EJ-30F, EJ-50F or EL-40F.