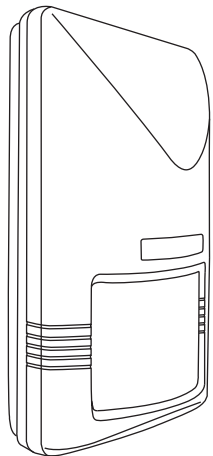
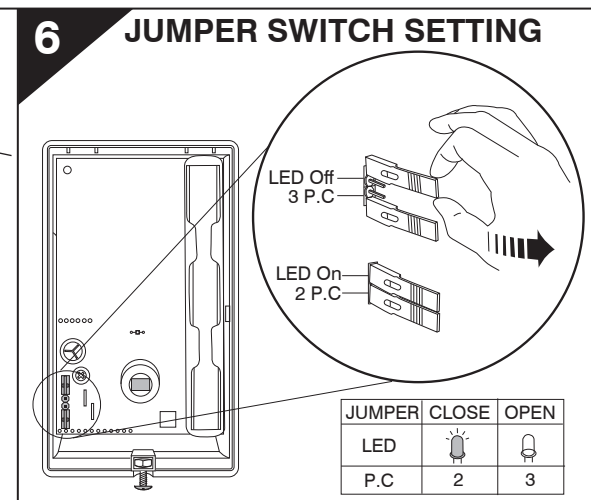
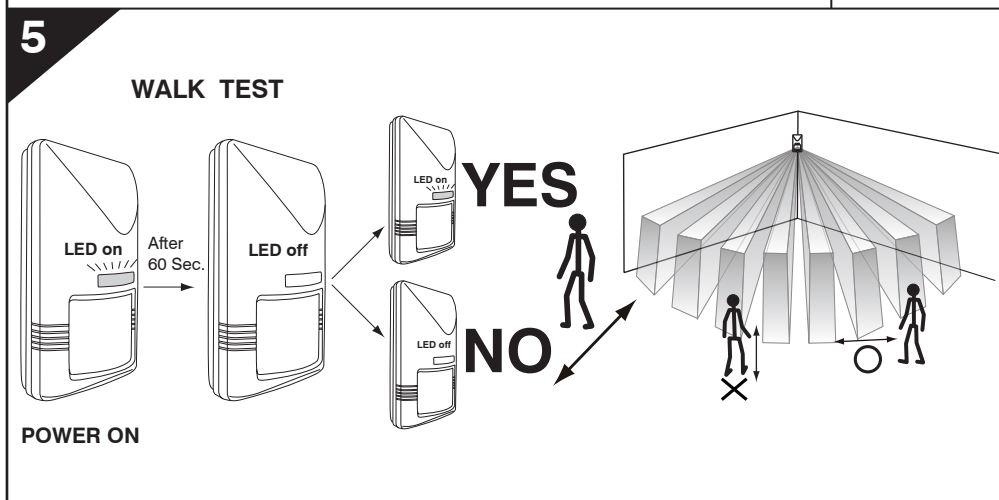
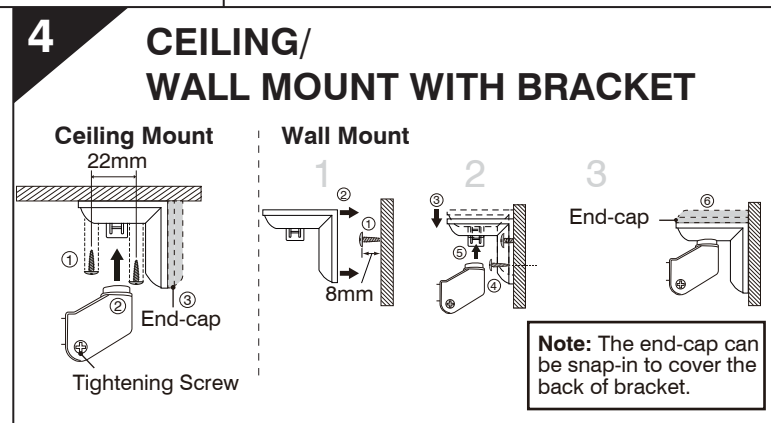
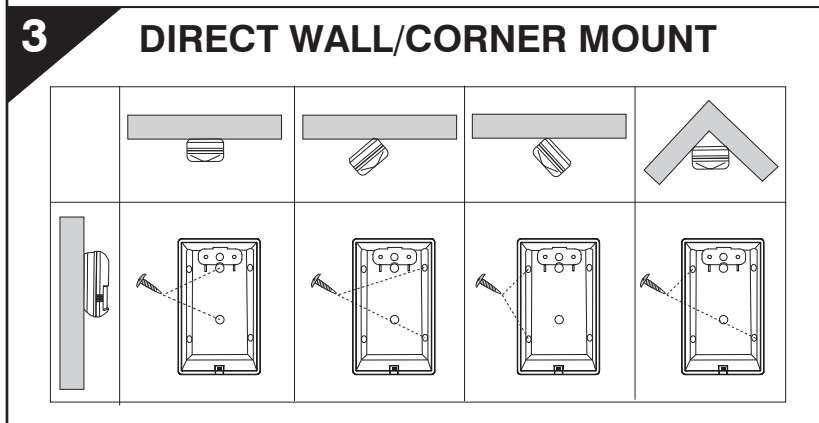
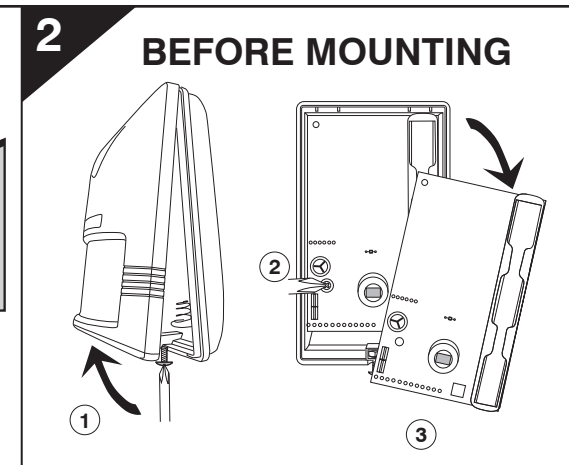
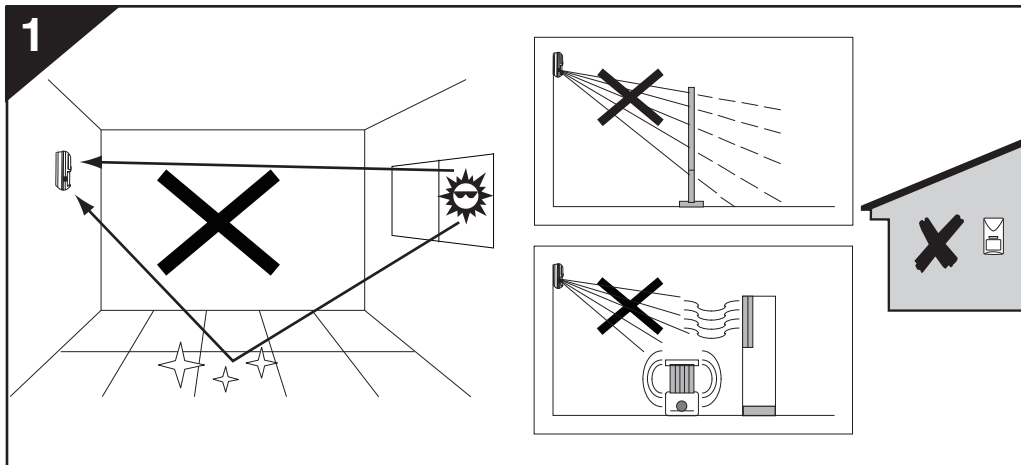


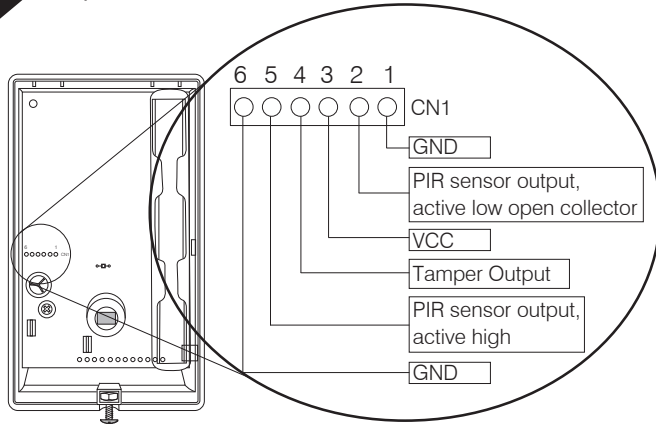
IR-550LP Low Power PIR Detector



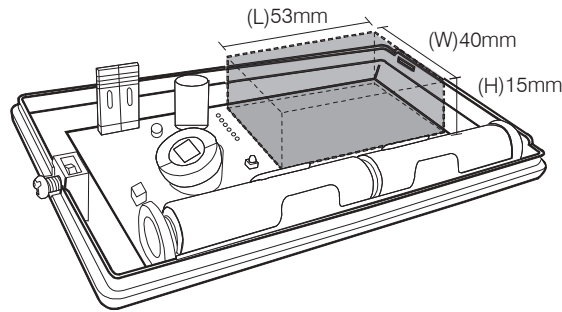
Low Power PIR Detector
低功耗紅外線偵測器
Installation instructions
安裝說明書



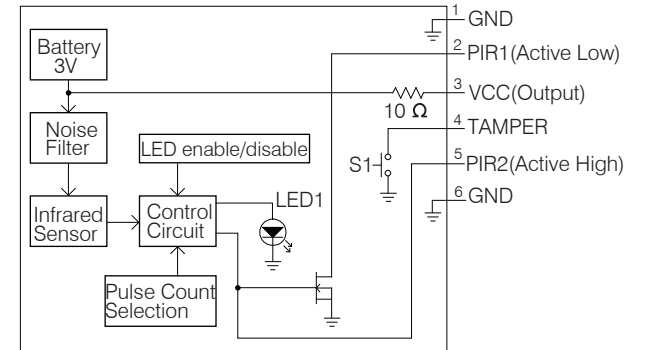
7 I/O CONNECTION



8 RF MODULE SPACE

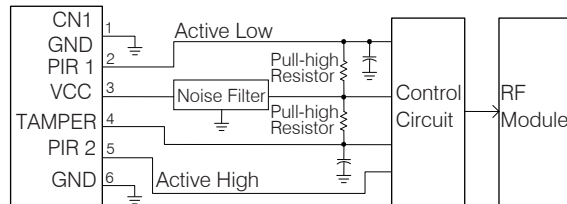


9 BLOCK DIAGRAM

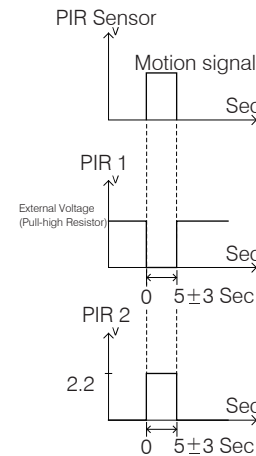
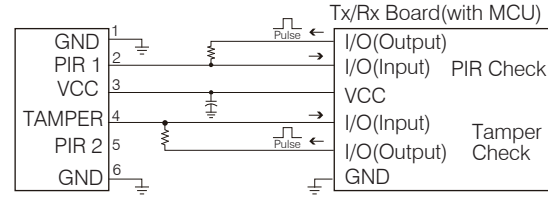


10

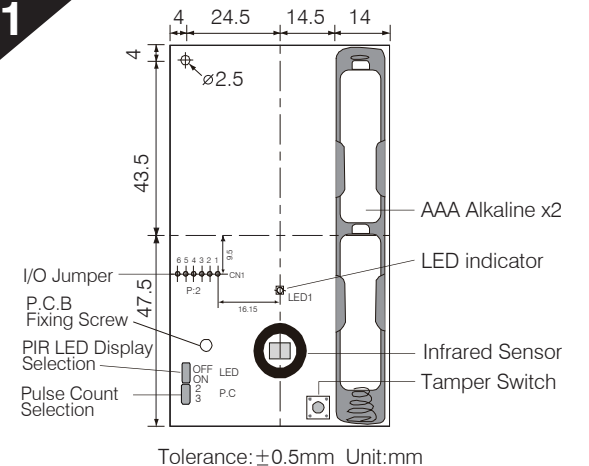
REFERENCE CIRCUIT 1



REFERENCE CIRCUIT 2

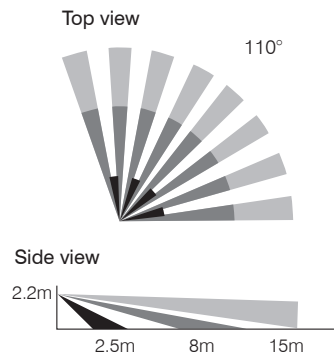


11



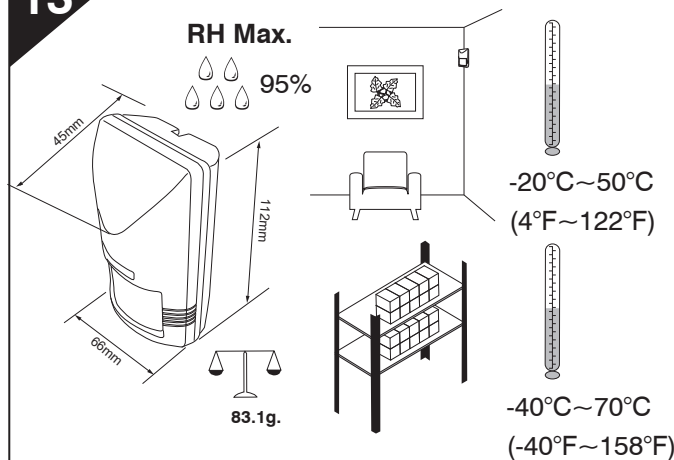
12

DETECTION PATTERN



13

RH Max.



SPECIFICATIONS

Power supply	2 x AAA Alkaline Battery
Operation voltage	3.0 VDC + 0.6V
Current drain	10uA standby, 20mA active LED off
Warm up time	Approx. 60 seconds
Detection range	110° wide (12x12 m), 15x15 m
Detection output	PIR1 (ActiveLow)/PIR2 (ActiveHigh)
Tamper protection	Yes, active low, non-latching
LED indicator	ON/OFF jumper selectable
Mounting height	1.8~3.6 m
Pulse count	2 / 3 pulses, jumper selectable
Humidity	95°, RH maximum
Op. temperature	-20°C ~ 50° (-4°F ~ 122°F)
Dimensions	112 x 66 x 45 mm