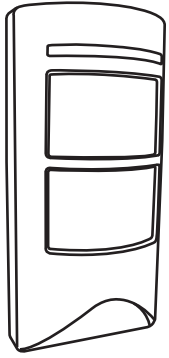


**Low Power Outdoor PIR Detector
IR-680LP**

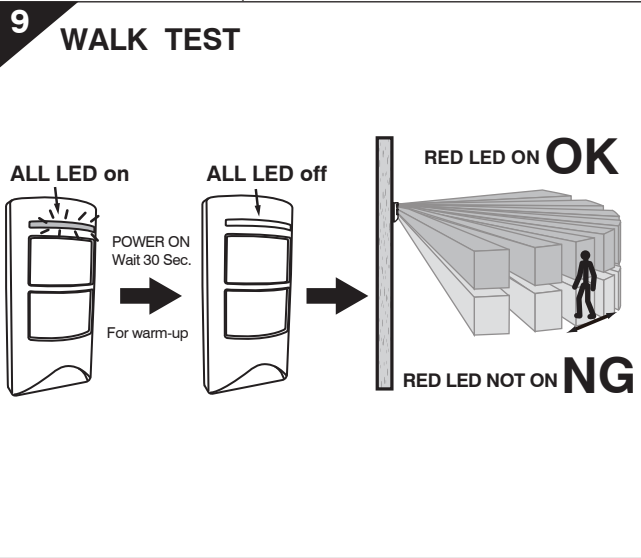
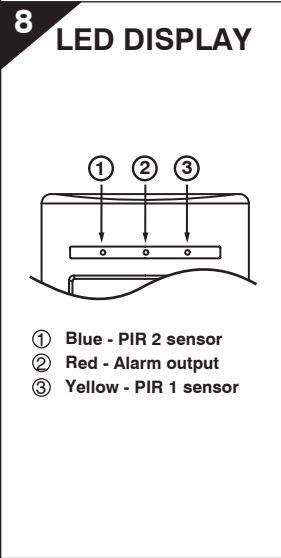
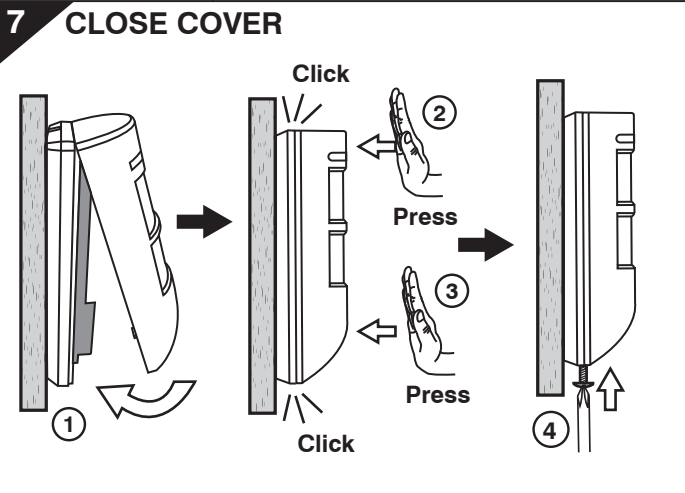
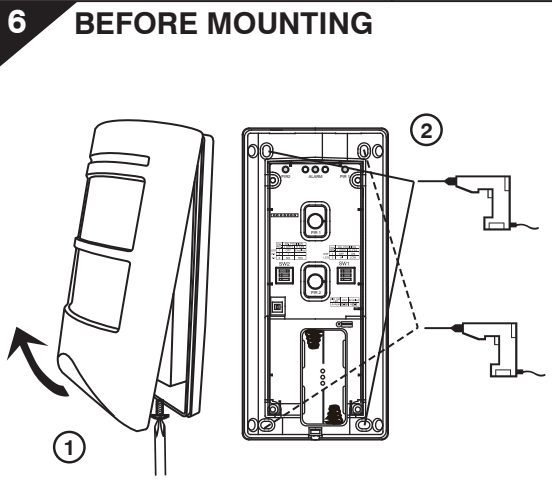
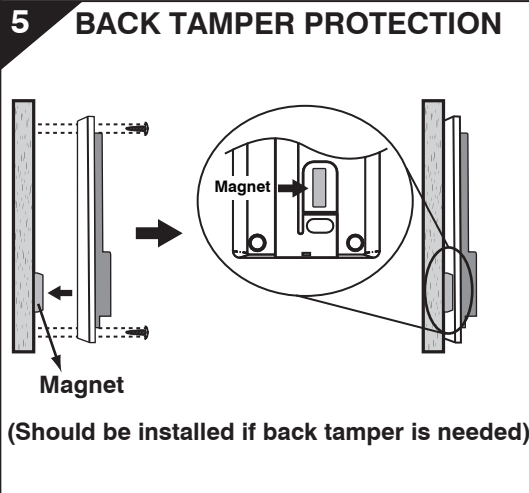
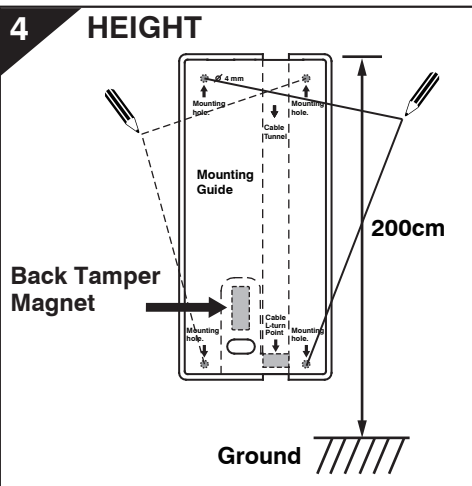
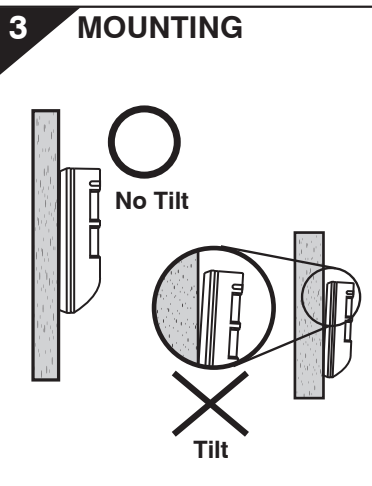
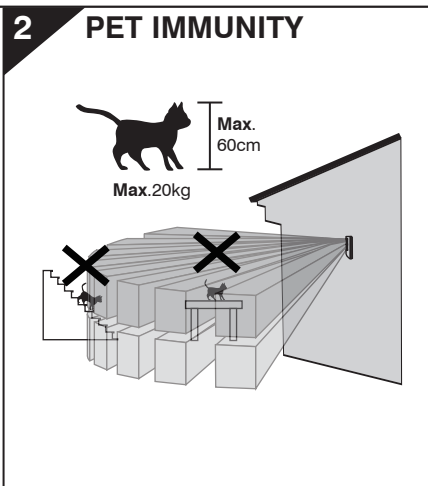
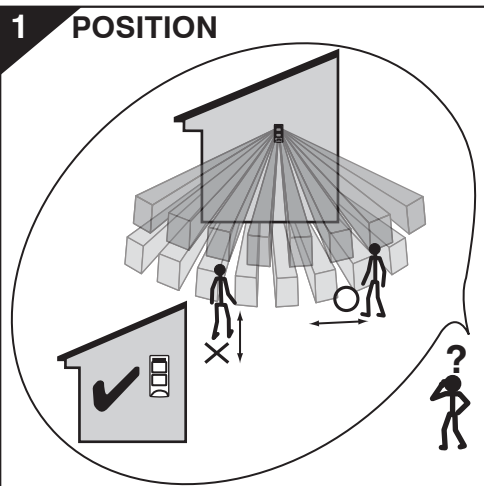


**Low Power Outdoor PIR
戶外型紅外線偵測器
Installation instructions
安裝說明書**

IR-680LP is an low power passive infrared detector designed with excellent waterproof and UV resistance compatibilities to provide reliable intruder detection for outdoor environments.

This superior outdoor PIR detector is not only powered by 2 AA alkaline batteries but it is also able to immune the detection of domestic pets up to 20kg,

IR-680LP can provide volumetric detection up to 12m long and 110° wide. For security systems that require reliable outdoor detection with low power consumption and pet immune detection, IR-680LP is definitely a second-to-none choice.



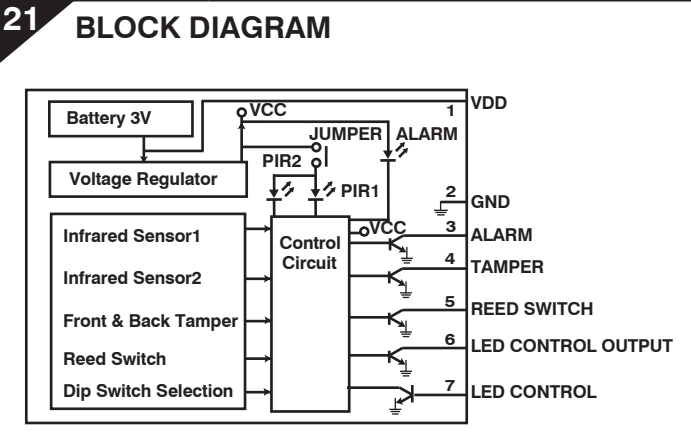
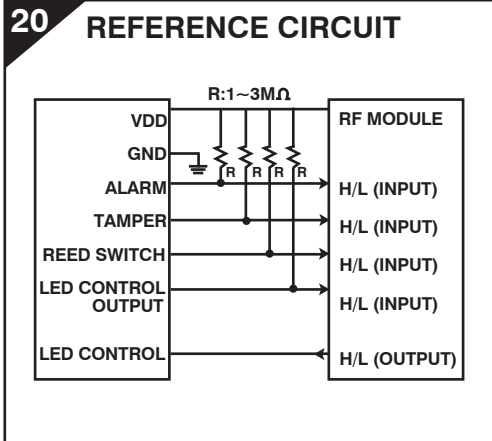
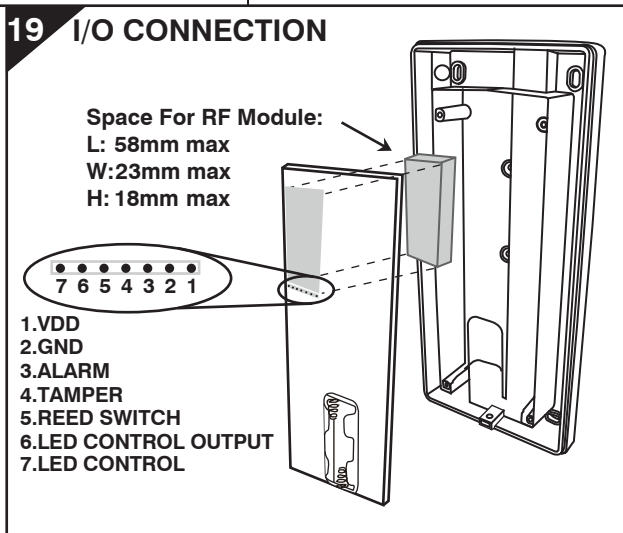
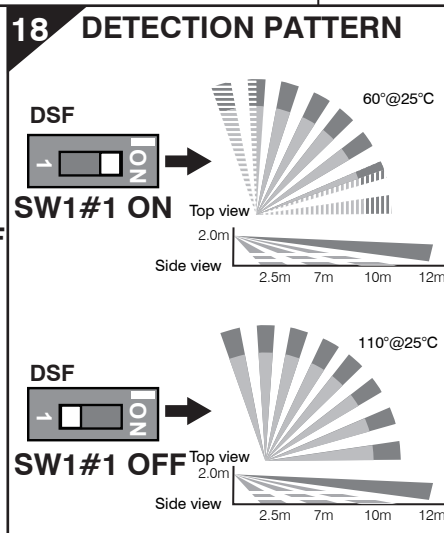
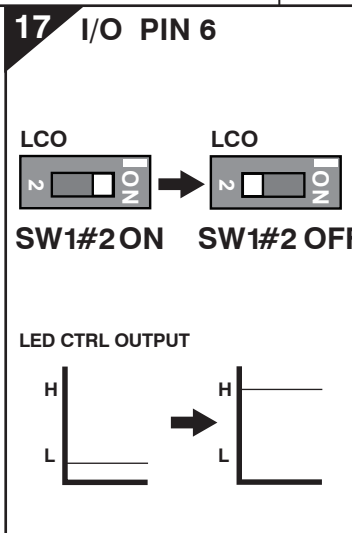
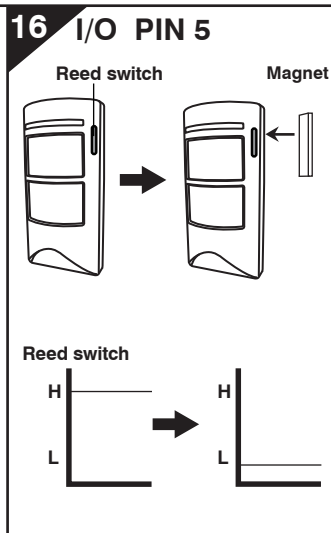
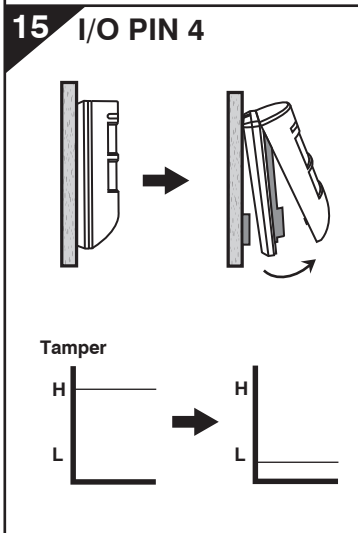
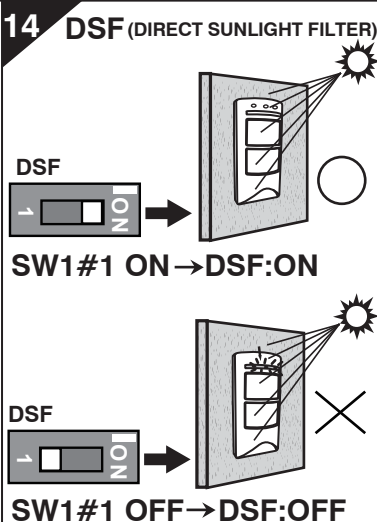
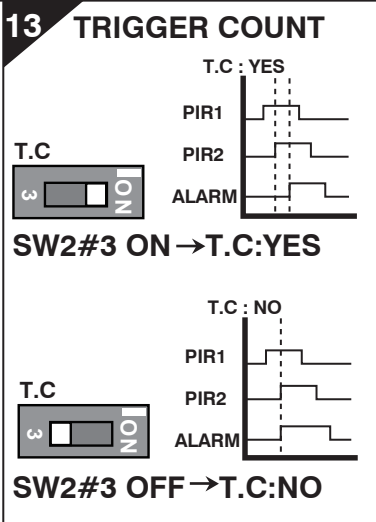
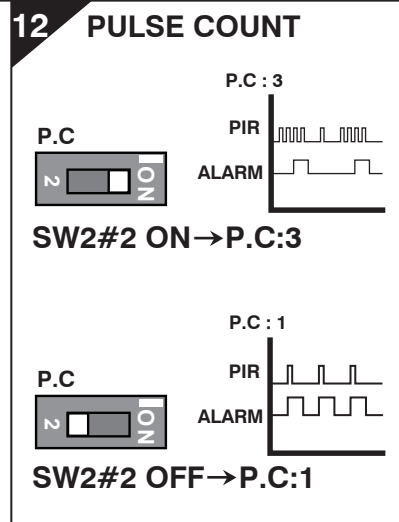
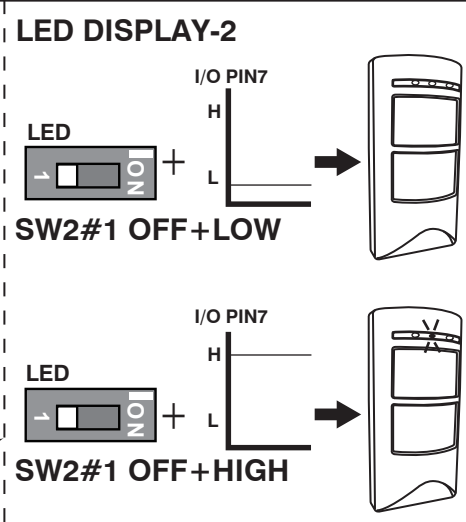
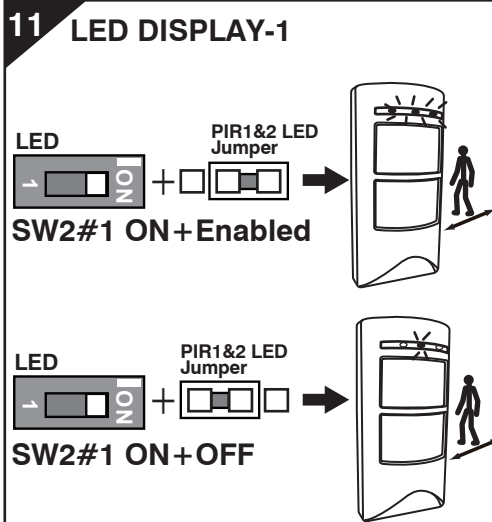
10 OPERATION SETTING

SW. NO.	SW. POSITION			
	L (OFF)	R (ON)		
LED 1	OFF	Enabled		
PC 2	1	3	DSF	1 OFF ON
T.C 3	NO	YES	LCO	2 HI LOW

SW2		SW1	
OFF	ON	OFF	ON
NO	NO	NO	NO
NO	NO	NO	NO
NO	NO	NO	NO

PIR 1&2 LED Jumper	OFF	Enabled

P.C: Pulse Count
T.C: Trigger Count
DSF: Direct Sunlight Filter
LCO: LED Control Output



SPECIFICATIONS

Power supply	2xAA Alkaline battery
Operation Voltage	3.0 VDC±0.5
Current drain	< 40uA standby
Detection range	60°/110°, 12 x 12 m @25°C
Infrared sensor	2 x dual element
Pet immunity	Up to 20kg, 60cm tall
Direct sunlight Filter(DSF)	ON/OFF,selectable
Pulse count(P.C)	1 / 3 selectable
Trigger count(T.C)	ON / OFF,selectable
Tamper protection	Detector removal
Detectable speed	0.3 ~ 3 m/sec.
Mounting height	2.0 m typical
Operation temperature	-20°C ~ 50°C (-4°F ~ 122°F)
Storage temperature	-40°C ~ 70°C (-40°F ~ 158°F)
Dimensions	180x90x57 mm

IR-TEC
IR-TEC International Ltd.
www.irtec.com
Ver. 1 058-68004-001

